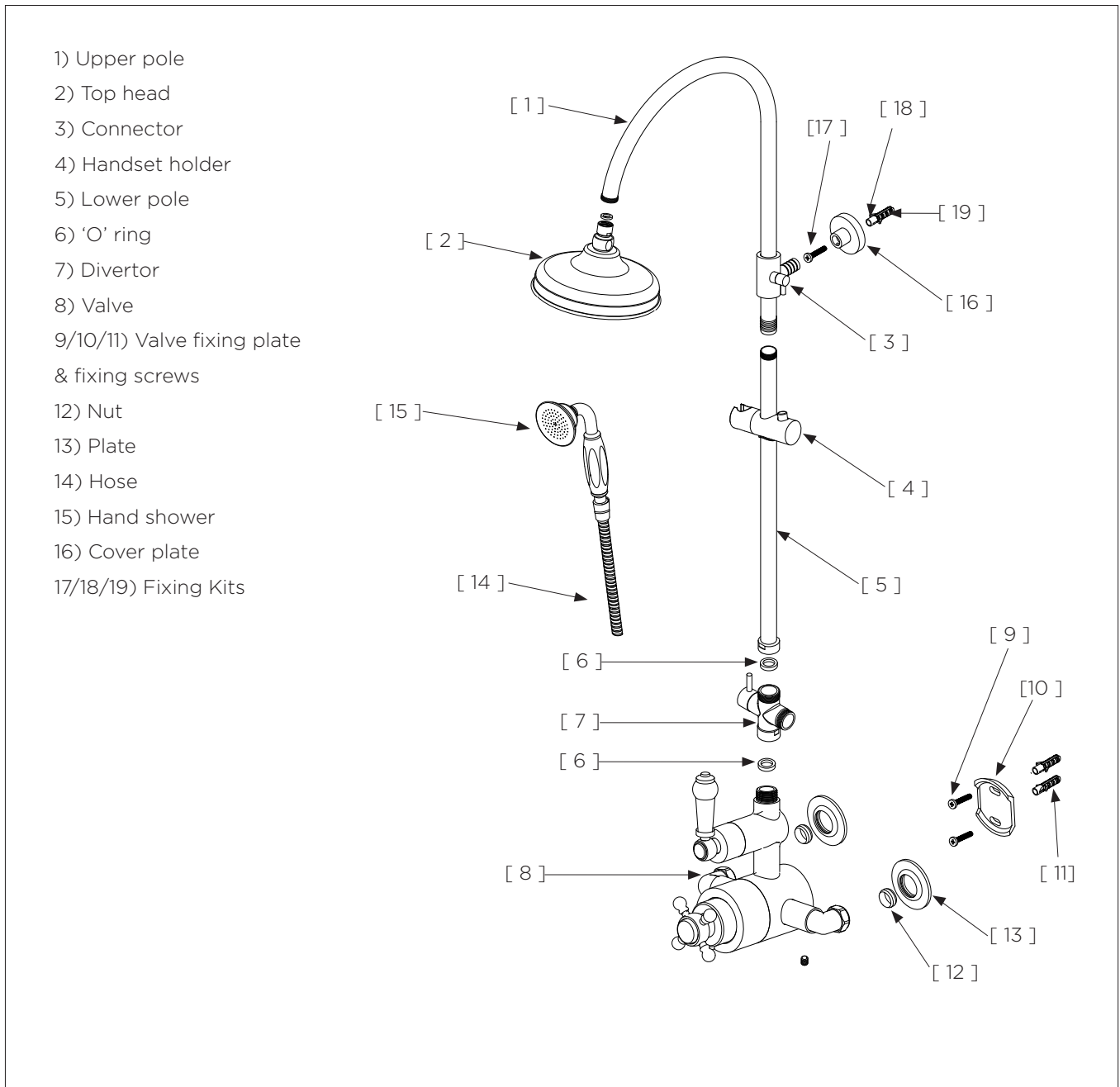


INTRODUCTION

The Model supplied may vary from the image shown below. Please note that the general installation process for all Shower Set fittings are the same and the following guide will take you through the process.

IMPORTANT

If you are unsure of any part of the instructions in this document then we recommend that you contact a reputable qualified trades person.



BEFORE INSTALLATION

- 1) Flush out pipework thoroughly to remove any debris.
- 2) Turn off the mains water supply before commencing work.
- 3) Before installation identify all components and inspect the product for any damage. A claim will not be accepted if an obvious defect is found after installation.

INSTALLATION

- 1) Put the handset holder [4] onto the lower pole [5]
- 2) Connect the upper pole [1] and the lower pole [5] making sure that the end of pole [1] goes through the 'O' rings inside the connector [3] for seal
- 3) Mark out the position on the wall
- 4) Prepare the pipework and fit the valve fixing plate [10] on the wall
- 5) Connect the diverter [7] to the valve and attach riser pole to the diverter [7]
- 6) Fix the valve and connect the inlets, making sure the hot connection is to the left and the cold to the right
- 7) Check connections for watertightness

Guarantee

The Lifetime Guarantee is only valid to customers who complete and submit the online Niagara® Guarantee Registration Form within 30 days of installation. Please note that products with finishes other than Chrome are guaranteed for 3 years only, these products must also be registered online to activate the 3 Year Guarantee.

To register and activate your Guarantee please visit www.niagarabathrooms.co.uk

Aftercare

During installation, extra care must be taken to avoid damaging the fitting or it's finish.

To maintain the appearance of the fitting, please ensure it is cleaned regularly using a clean soft damp cloth only. Do not use abrasive sponges, scouring agents, organic solvents or acidic cleaners as they may cause surface deterioration.